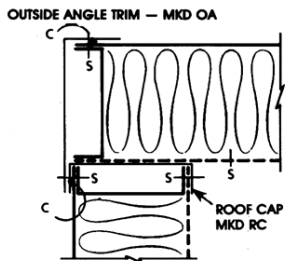
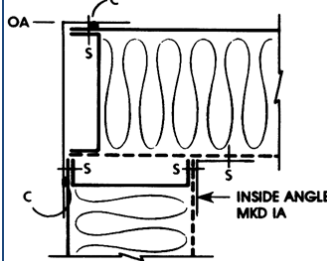


**WALL TO JOINT**  
Detail 1

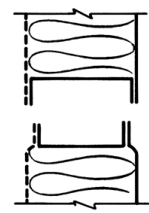


**WALL TO ROOF JOINT**  
Detail 2

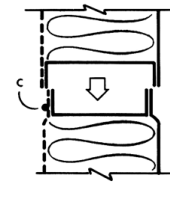


**WALL TO CORNER JOINT**  
Detail 3

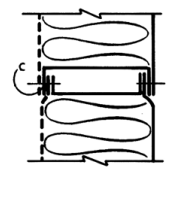
**TYPICAL TONGUE AND GROOVE PANEL JOINT**



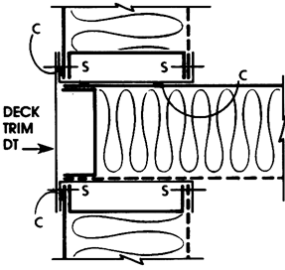
**STEP 1**



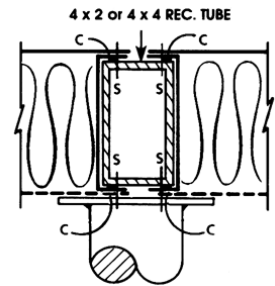
**STEP 2**



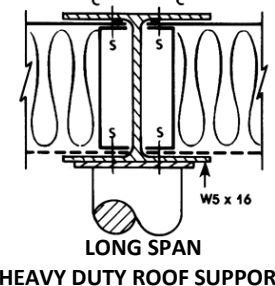
**STEP 3**



**DECK JOINT**  
Detail 4

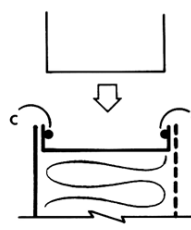


**LONG SPAN ROOF SUPPORT**  
Detail 5

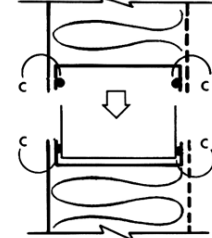


**LONG SPAN HEAVY DUTY ROOF SUPPORT**  
(Optional as Required)  
Detail 6

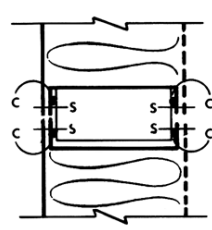
**TYPICAL PANEL JOINT**



**STEP 1**

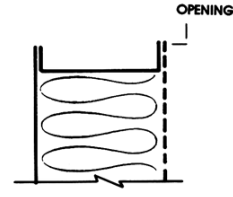


**STEP 2**

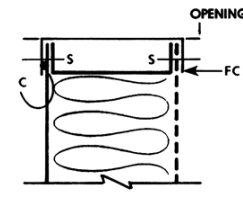


**STEP 3**

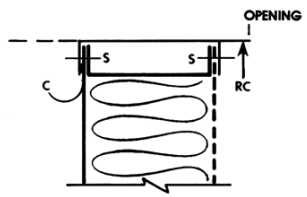
**TYPICAL FRAMED OPENINGS**



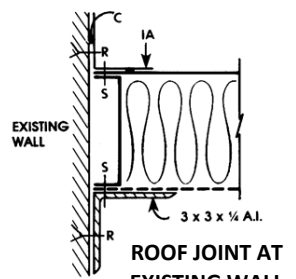
**STEP 1**



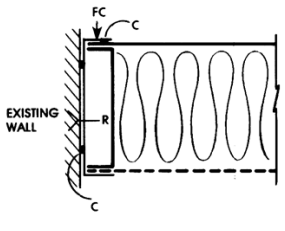
**STEP 2**



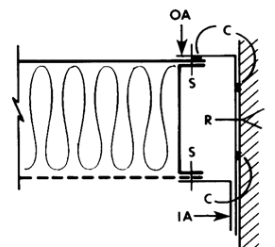
**STEP 3**



**ROOF JOINT AT EXISTING WALL**  
(Structural)  
Detail 7

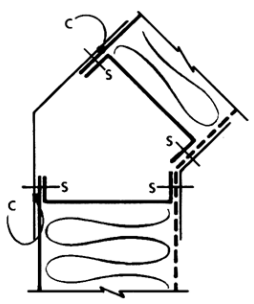


**STARTING PANEL WALL AT EXISTING WALL**  
Detail 8



**EXISTING PANEL WALL AT EXISTING WALL**  
Detail 9

**TYPICAL ERECTION DETAILS**



**SKEWED WALL JOINT**  
Detail 10

1. All fasteners show n "S" to be No. 12 x 1" self-drilling sheet-metal screws, 12" O.C., furnished by Innovative Metal Industries (IMI).
2. All fasteners show n "R" to be suitable for fastening into the existing conditions, 24" O.C., not furnished by IMI.
3. All field sealant show n "C" to be 1/4" diameter continuous bead, solid side only, furnished by IMI.
4. All furnished trim will be in 10'-0" lengths, fabricated out of 16 ga. galvanized steel suitable for field cutting, notching and mitering as require d. Joints to be butt tight and sealed.
5. All panel dimensions are nominal. For exact size refer to the Bill of Materials.
6. Doors are furnished where shown on the drawings, installed in the panel at the factory and need only to be assembled as any other panel. All door assemblies are complete with latches, inside releases and door pulls. Standard door hardware is "Vertik310"
7. Roof support, lally columns and other structural steel is supplied as shown on the drawings.

8. Standard panel construction is:
  - a. 18 ga. galvanized solid outer skin.
  - b. 22 ga. galvanized perforated inner skin.
  - c. 16 ga. galvanized stiffeners, 24" O.C.

**Caulking instructions:**  
Cut and install panel connectors the full length of the panels' side channel. Make sure that each panel-to-connector surface (four surfaces per panel connection) is sealed with a continuous bead of caulk. The caulk is placed on the inside flange of the panel, and then is spread by the installation of the panel connector into an air-tight layer. To prevent air leakage at the connector ends, apply a generous amount of caulk to the inside of the panel channel at the solid side of the panel.